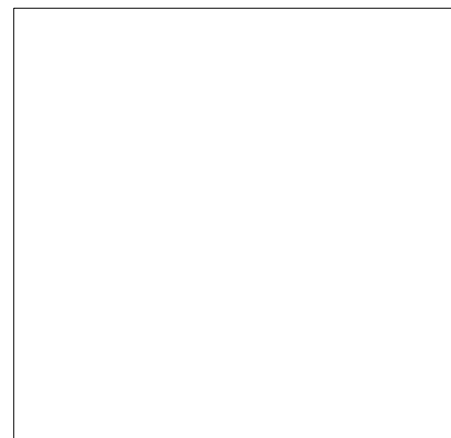
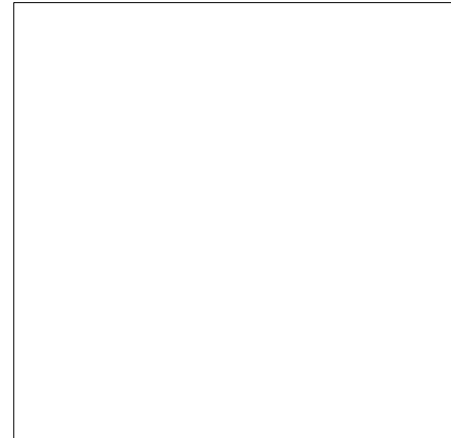
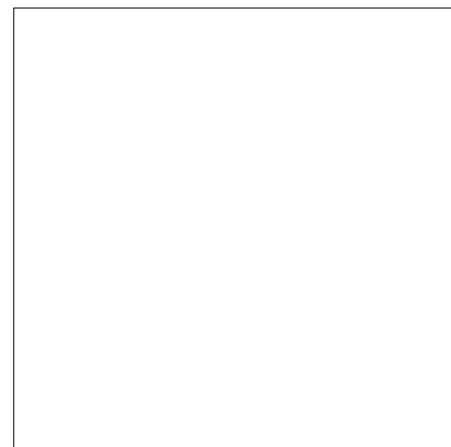


PROP. 1ST FLOOR - STORAGE BUILDING

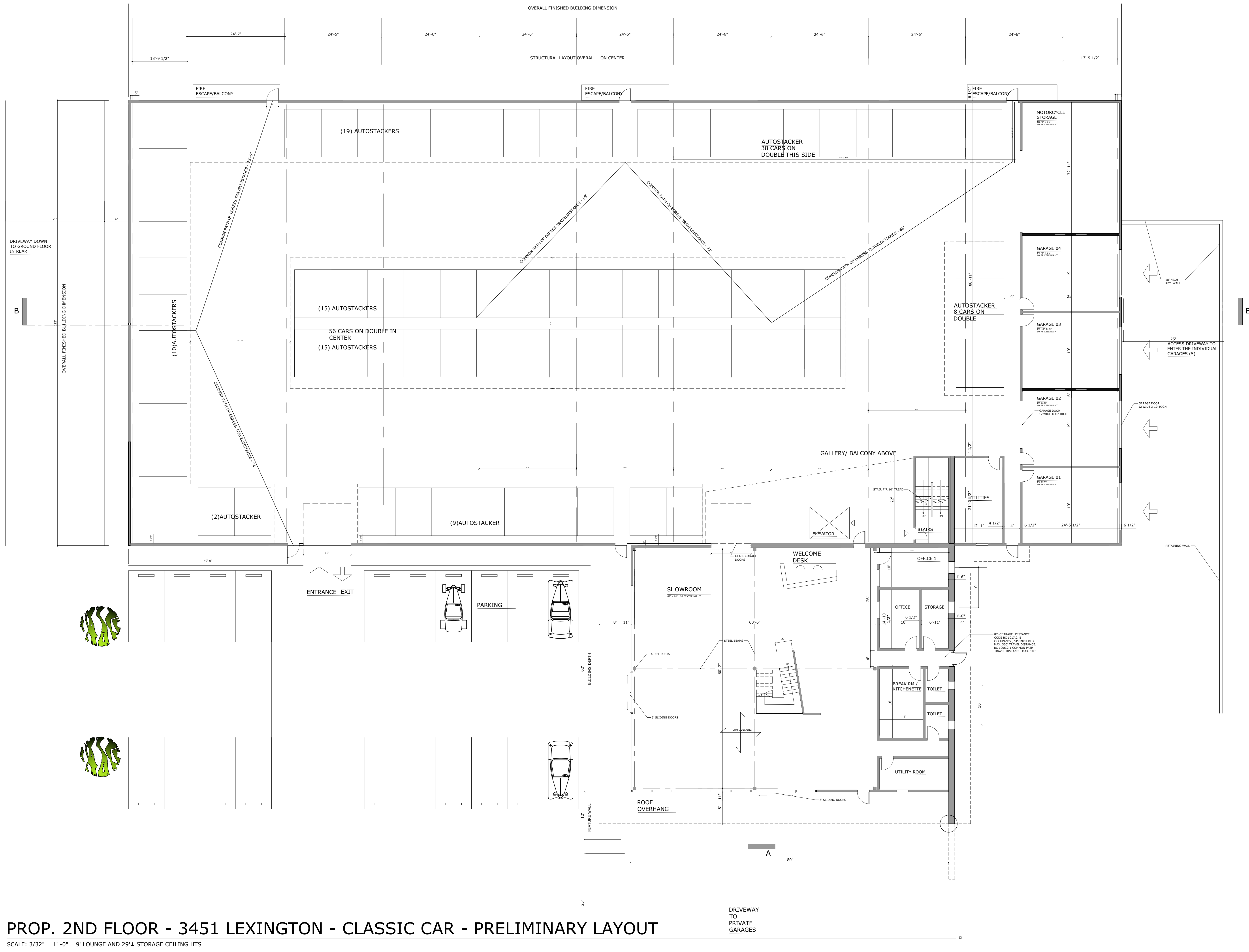
SCALE: 3/32" = 1' - 0" 14' CEILING HT



PROP. LOWER PLAN AND STORAGE
 HEIKE A. SCHNEIDER
 ARCHITECT, AIA, LEED AP
 515 CROTON HEIGHTS ROAD
 YORKTOWN HTS, NY 10598
 914-962-2119

Plan Title
 Title/Owner
CLASSIC CARS
 SHOWROOM, STORAGE, GARAGE
 3451 LEXINGTON AVE
 MOHEGAN LAKE, NY 10547

Date: 2-18-20
 Revision:
 Bidding:



PROP. 2ND FLOOR - 3451 LEXINGTON - CLASSIC CAR - PRELIMINARY LAYOUT

SCALE: 3/32" = 1' - 0" 9' LOUNGE AND 29'± STORAGE CEILING HTS

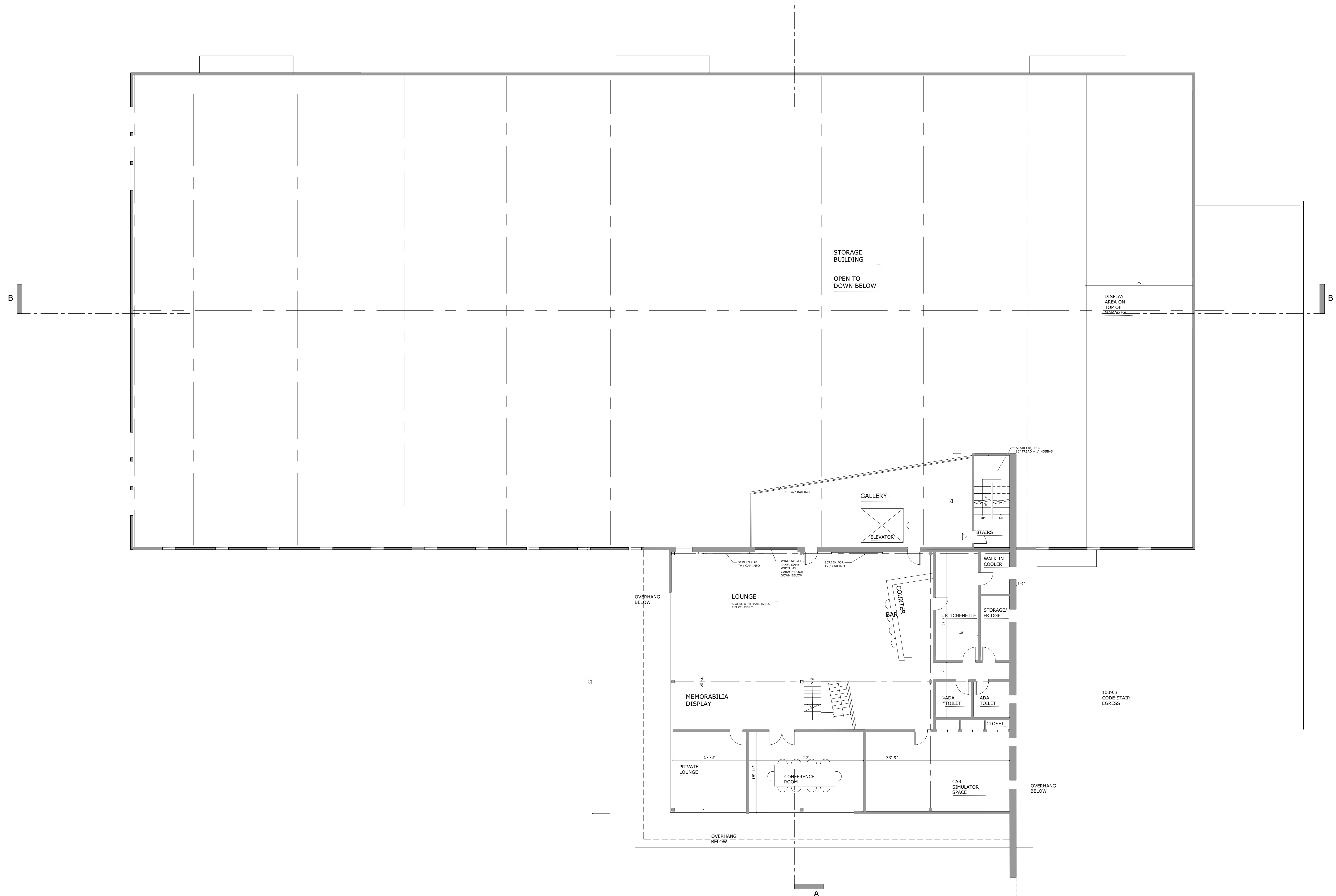
PROP. UPPER PLAN AND SHOWROOM

HEIKE A. SCHNEIDER
ARCHITECT, AIA, LEED AP
515 CROTON HEIGHTS ROAD
YORKTOWN HTS, NY 10598
914-962-2119

CLASSIC CARS
SHOWROOM, STORAGE, GARAGE
3451 LEXINGTON AVE
MOHEGAN LAKE, NY 10547

Date: 4-17-20
Revision:
Bidding:

A2



PROP. MEZZANINE FLOOR - 3451 LEXINGTON - CLASSIC CAR - PRELIMINARY LAYOUT

SCALE: 3/32" = 1'-0" 9' CEILING HT.

PROP. UPPER PLAN AND SHOWROOM

HEIKE A. SCHNEIDER
 ARCHITECT, AIA, LEED AP
 515 CROTON HEIGHTS ROAD
 YORKTOWN HTS, NY 10598
 914 962-2119

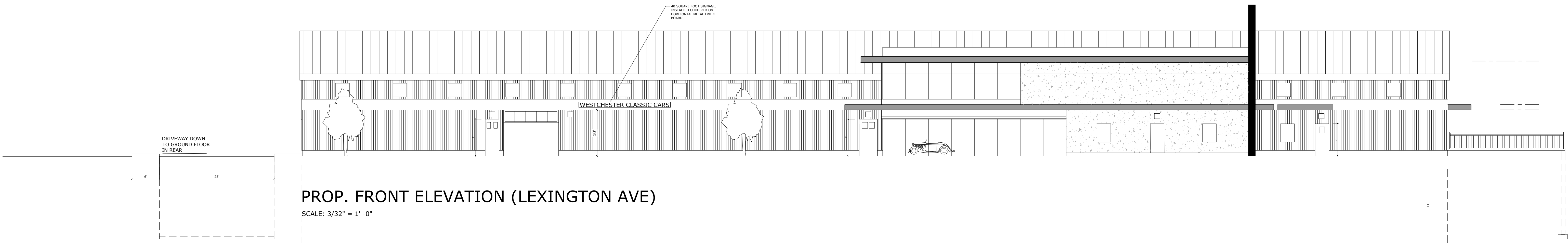
CLASSIC CARS
 SHOWROOM, STORAGE, GARAGE
 3451 LEXINGTON AVE
 MOHEGAN LAKE, NY 10547

Plan Title

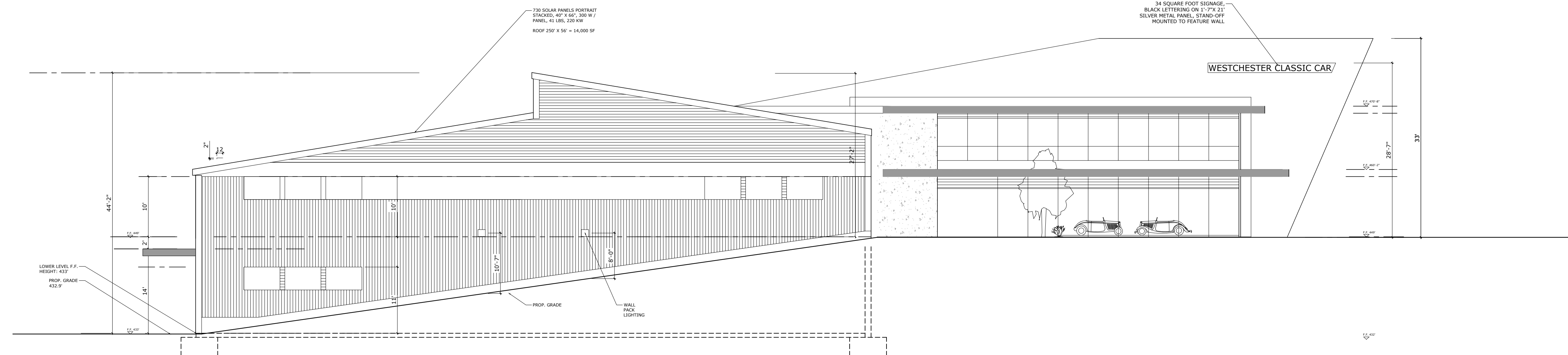
Title/Owner

Date: 4-17-20
 Revision:
 Bidding:

A3



PROP. FRONT ELEVATION (LEXINGTON AVE)
SCALE: 3/32" = 1' - 0"



PROP. SIDE ELEVATION (SOUTH)
SCALE: 3/32" = 1' - 0"

PROP. FRONT AND SOUTH ELEVATIONS

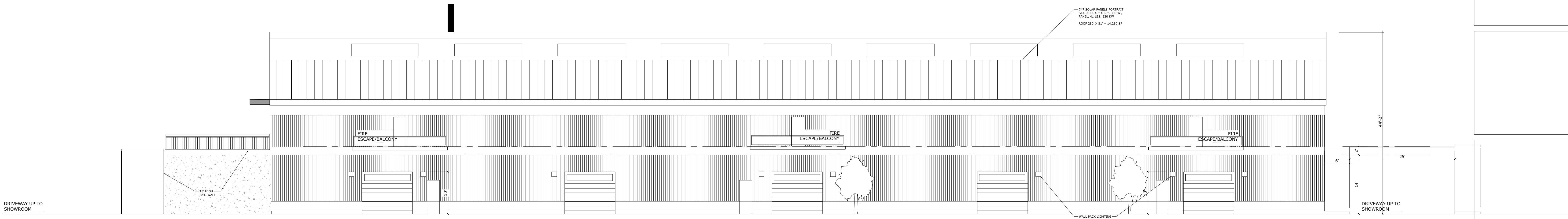
Plan Title

Title/Owner
HEIKE A. SCHNEIDER
ARCHITECT, AIA, LEED AP
515 CROTON HEIGHTS ROAD
YORKTOWN HTS., NY 10598
914-962-2119

CLASSIC CARS
SHOWROOM, STORAGE, GARAGE
3451 LEXINGTON AVE
MOHEGAN LAKE, NY 10547

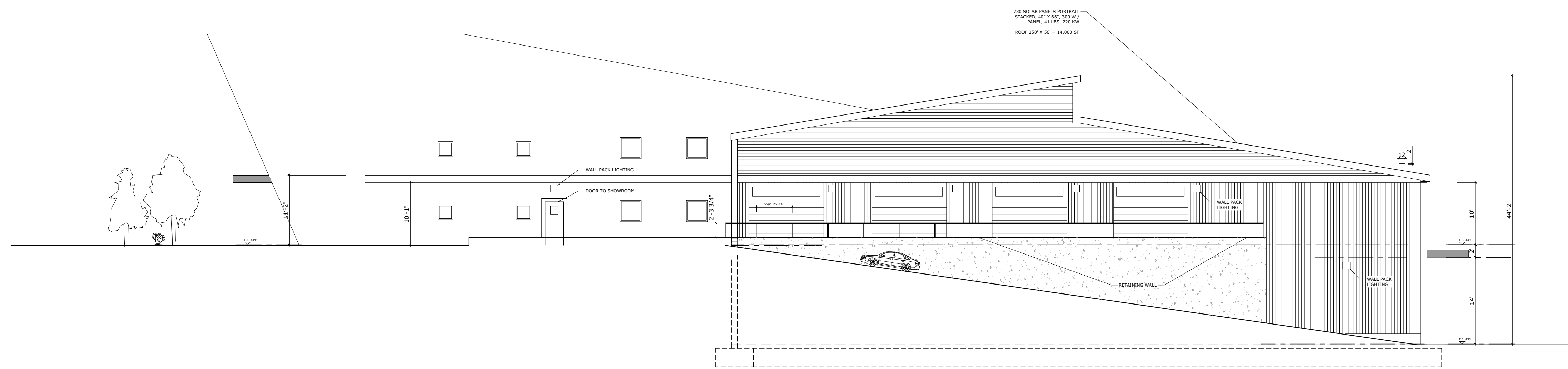
Date: 4-15-20
Revision:
Bidding:

A4



PROP. REAR ELEVATION

SCALE: 3/32" = 1' - 0"



PROP. SIDE ELEVATION (NORTH)

SCALE: 3/32" = 1' - 0"

PROP. REAR AND NORTH ELEVATIONS

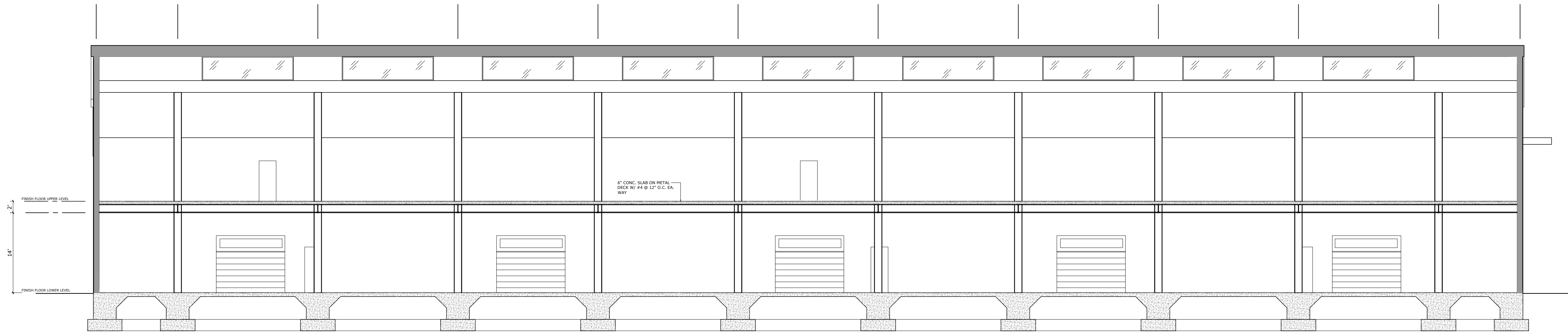
Plan Title

HEIKE A. SCHNEIDER
ARCHITECT, AIA, LEED AP
515 CROTON HEIGHTS ROAD
YORKTOWN HTS., NY 10598
914-962-2119

CLASSIC CARS
SHOWROOM, STORAGE, GARAGE
3451 LEXINGTON AVE
MOHEGAN LAKE, NY 10547

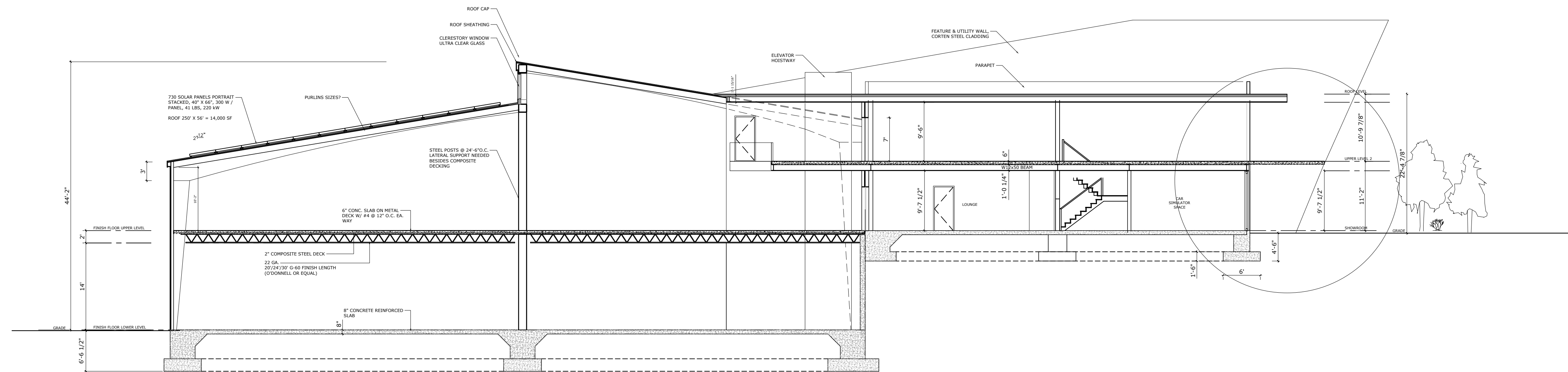
Date: 4-17-20
Revision:
Bidding:

A5



PROP. BLDG. SECTION 'B'

SCALE: 3/32" = 1' - 0"



PROP. BLDG. SECTION 'A'

SCALE: 3/32" = 1' - 0"

PROP. SECTION A-A & SECTION B-B

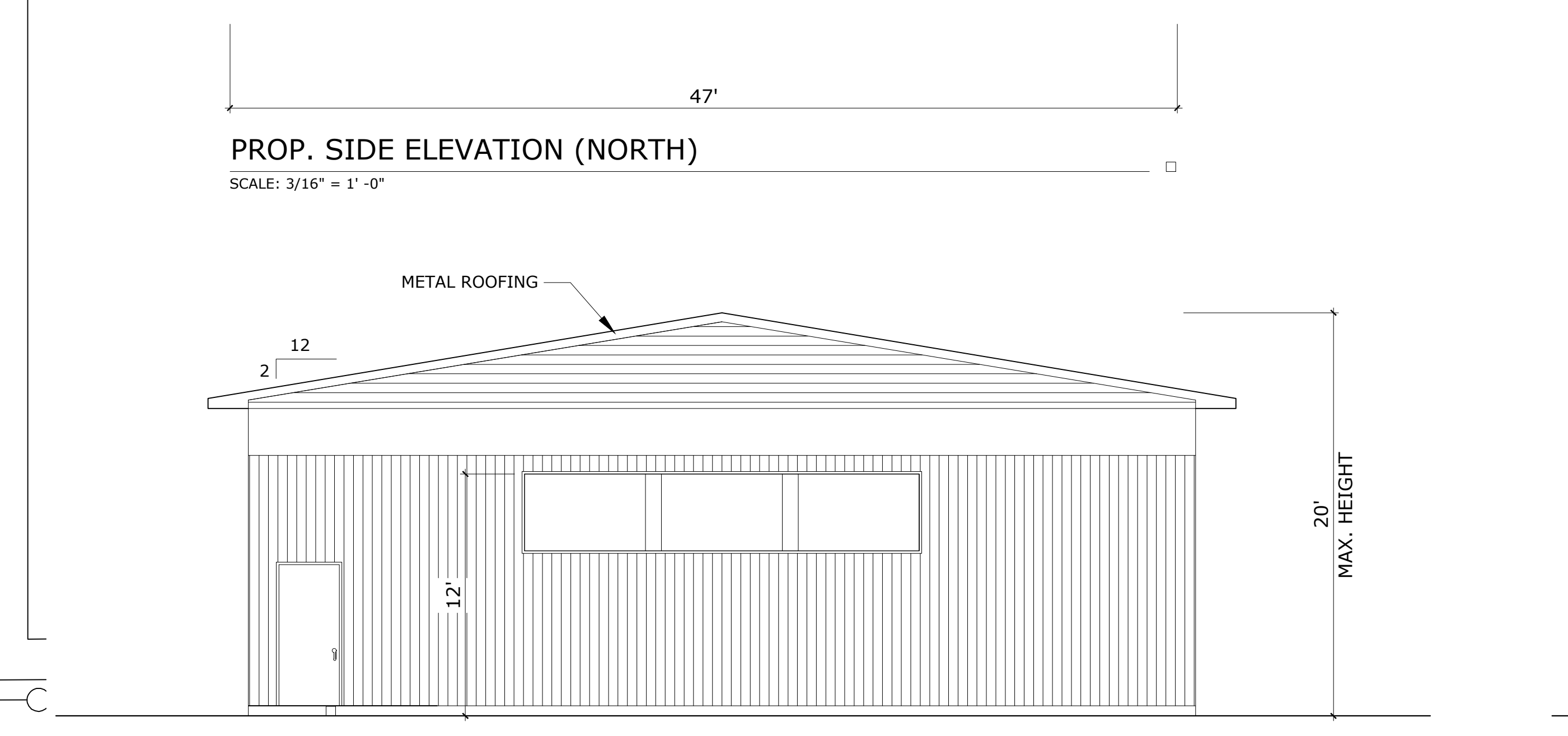
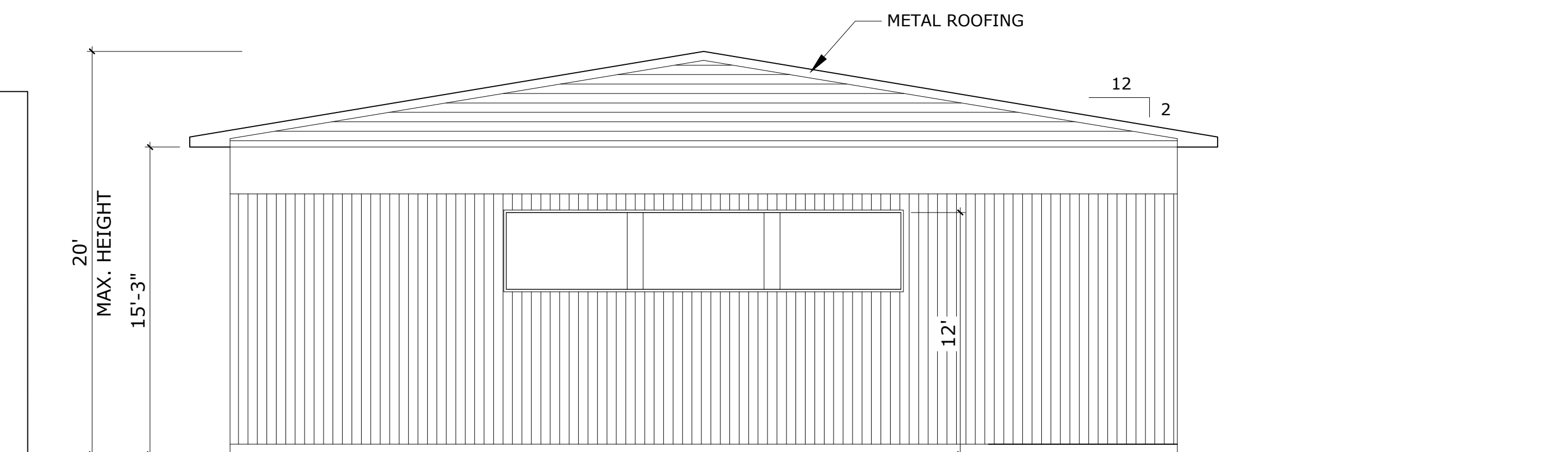
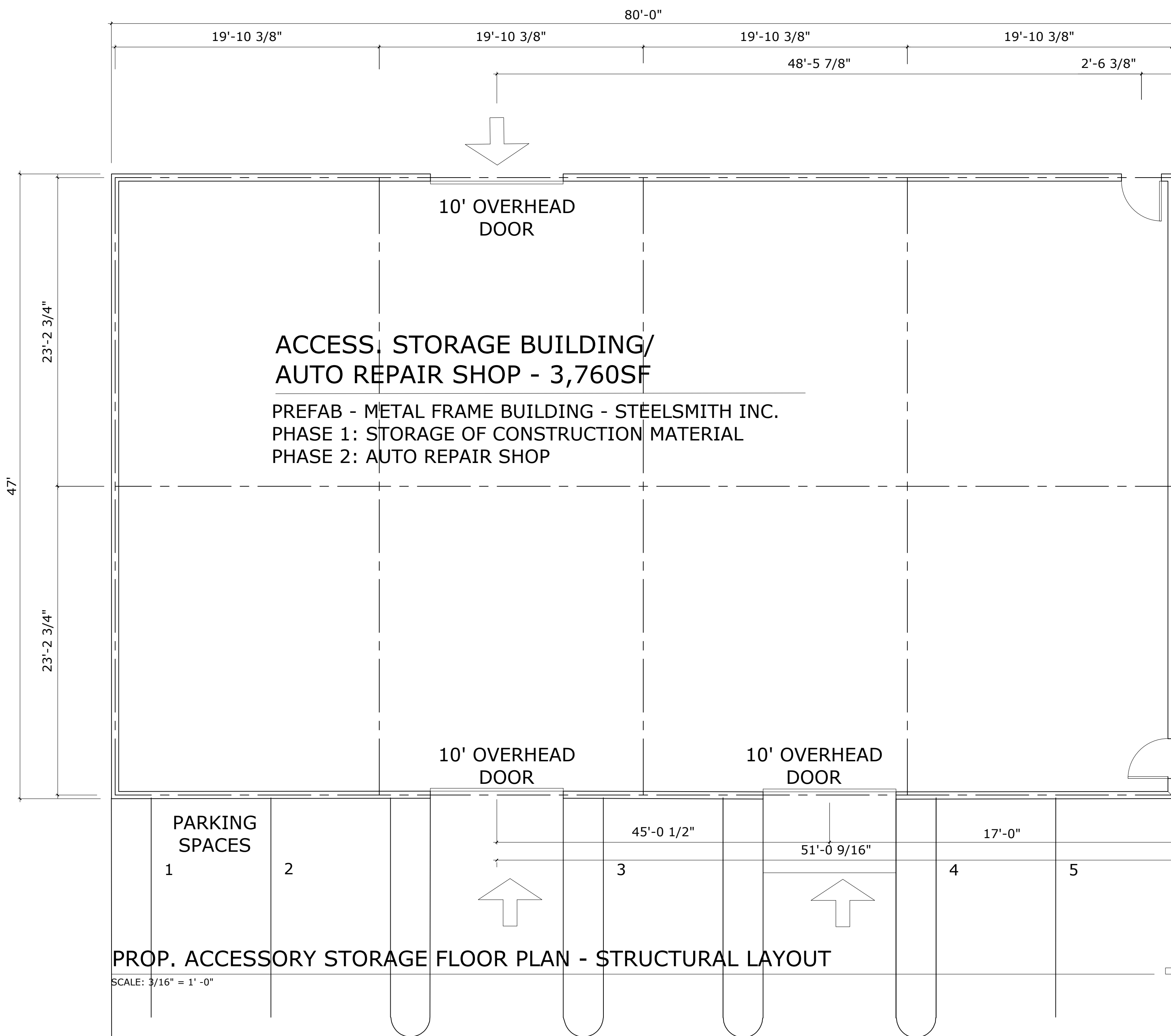
Plan Title
Title/Owner

HEIKE A. SCHNEIDER
ARCHITECT, AIA, LEED AP
515 CROTON HEIGHTS ROAD
YORKTOWN HTS., NY 10598
914-962-2119

CLASSIC CARS
SHOWROOM, STORAGE, GARAGE
3451 LEXINGTON AVE
MOHEGAN LAKE, NY 10547

Date: 3-26-20
Revision:
Bidding:

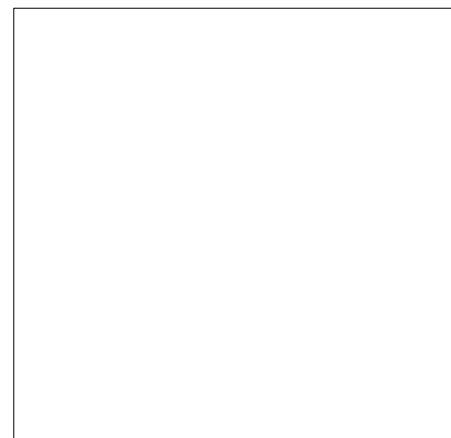
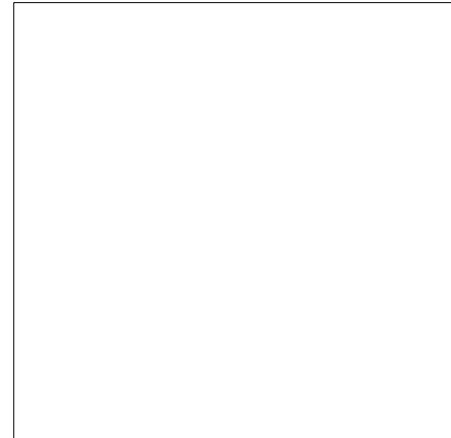
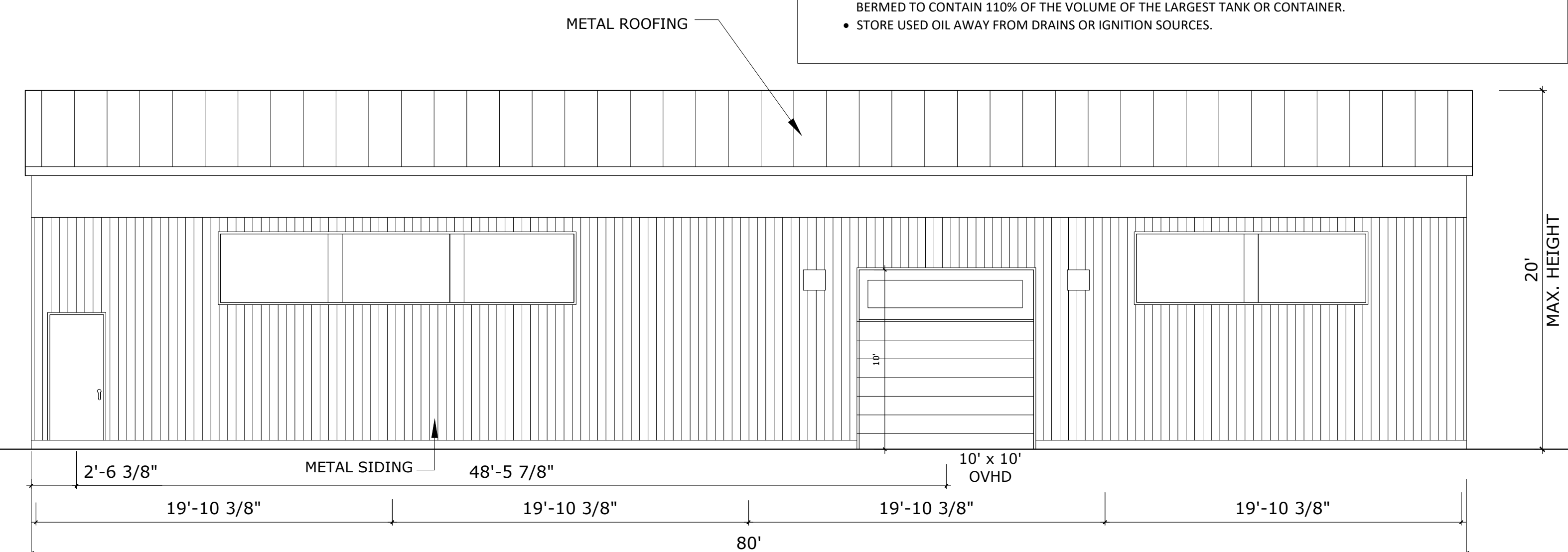
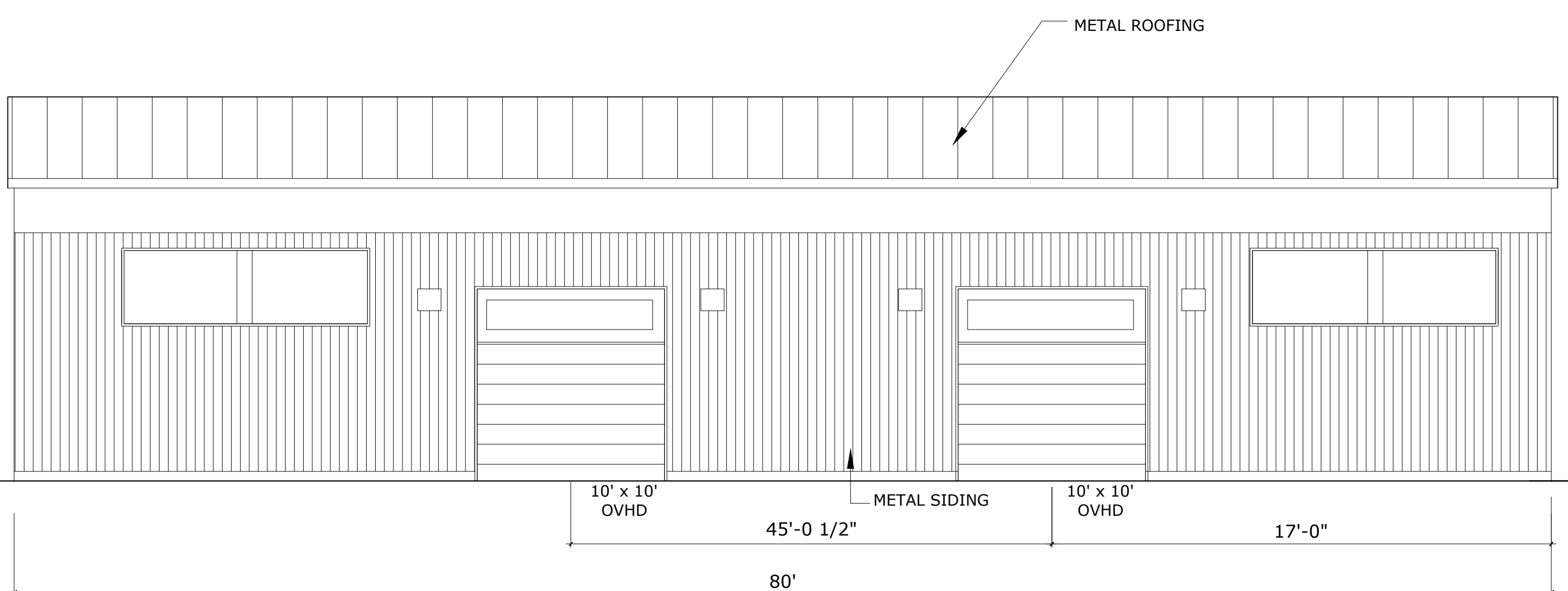
A6



ACCESSORY BUILDING - AUTO REPAIR SHOP AND STORAGE FACILITY DURING CONSTRUCTION
 WE ARE PROPOSING AN AUTO REPAIR SHOP LOCATED IN THE ACCESSORY BUILDING IN THE REAR, SOUTH-WEST CORNER OF THE PROPERTY. IT WILL NOT BE OPEN TO THE GENERAL PUBLIC. IT WILL ONLY BE USED FOR INTERNAL REPAIRS, SOLELY RELATED TO THE WESTCHESTER CAR STORAGE FACILITY.
 HOWEVER, THE REPAIR SHOP WILL BE REGISTERED BY THE DEPARTMENT OF MOTOR VEHICLE AS A VEHICLE REPAIR SHOP. THE MOTOR VEHICLE REPAIR SHOP WILL FOLLOW THE REGULATIONS PUBLISHED BY THE :
 NEW YORK STATE DEPARTMENT OF MOTOR VEHICLES,
 DIVISION OF VEHICLE SAFETY SERVICES,
 6 EMPIRE STATE PLAZA, ALBANY, NY 12228
WWW.DMV.NY.GOV

OIL CHANGES ARE TO FOLLOW THE "USED OIL REGULATIONS" PUBLISHED BY THE NEW YORK STATE DEPARTMENT OF ENVIRONMENTAL CONSERVATION POLLUTION PREVENTION UNIT.
USED OIL STORAGE:

- OIL WILL BE STORED IN STURDY, LEAKPROOF METAL CONTAINERS OR TANKS APPROVED BY STATE OR LOCAL BUILDING AND FIRE CODES. TO REGISTER TANKS WITH DEC CALL (518) 402-9543.
- THE CONTAINER OR TANK MUST BE CLEARLY LABELED: 'USED OIL'
- DO NOT OVERFILL TANKS AND CONTAINERS. WHEN FULL, PROMPTLY CONTACT A PERMITTED INDUSTRIAL WASTE HAULER TO EMPTY OR REMOVE THEM.
- KEEP CONTAINERS CLOSED UNLESS YOU ARE ADDING OR REMOVING USED OIL.
- TANKS AND CONTAINERS SHOULD BE PLACED ON AN IMPERVIOUS SURFACE, SUCH AS CONCRETE, THAT HAS NO CRACKS OR GAPS. TO MINIMIZE THE IMPACT OF SPILLS, IT IS RECOMMENDED THAT THE STORAGE AREA BE BERMED TO CONTAIN 110% OF THE VOLUME OF THE LARGEST TANK OR CONTAINER.
- STORE USED OIL AWAY FROM DRAINS OR IGNITION SOURCES.

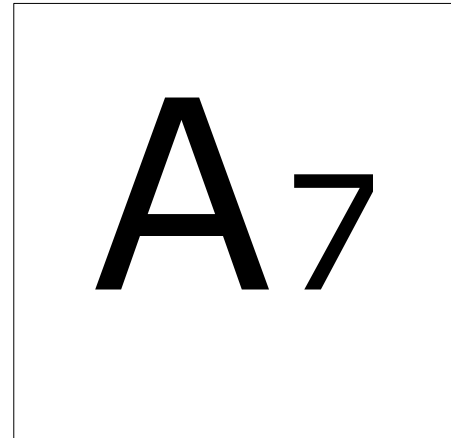


PROP. ACCESSORY STORAGE BUILDING

HEIKE A. SCHNEIDER
 ARCHITECT, AIA, LEED AP
 515 CROTON HEIGHTS ROAD
 YORKTOWN HTS, NY 10598
 914-962-2119

CLASSIC CARS
 SHOWROOM, STORAGE, GARAGE
 3451 LEXINGTON AVE
 MOHEGAN LAKE, NY 10547

Date: 4-15-20
 Revision:
 Bidding:

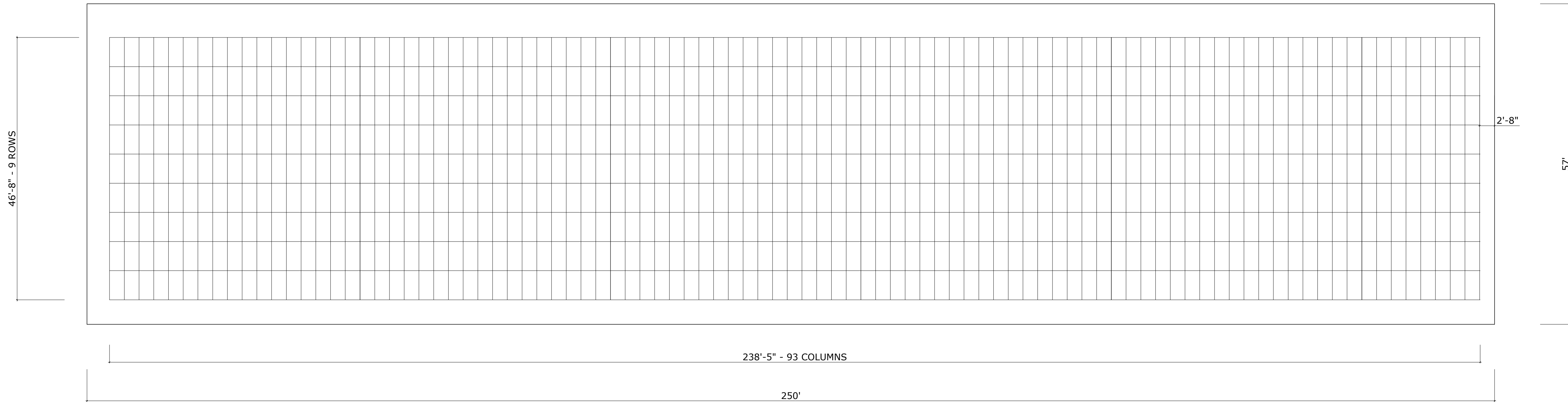


PROP. FRONT ELEVATION
 SCALE: 3/16" = 1' - 0"

PROP. REAR ELEVATION
 SCALE: 3/16" = 1' - 0"

62.2" X 31.9" 
 837 SOLAR PANELS

SOLAR PANEL SYSTEM:
 ROOF SURFACE: 250' X 57' = 14,250 SF
 837 SOLAR PANELS PORTRAIT STACKED, 31.9" X 62.2", 300 W / PANEL, 41 LBS,
 SOLAR POWER MAX: 251 KW
 BUILDING WILL BE SOLELY SOLAR POWERED. BATTERY STORAGE IN
 CONSIDERATION AND WILL BE LOCATED INSIDE THE BUILDING.



PROP. SOLAR PANEL LAYOUT - PICTURE ORIENTATION

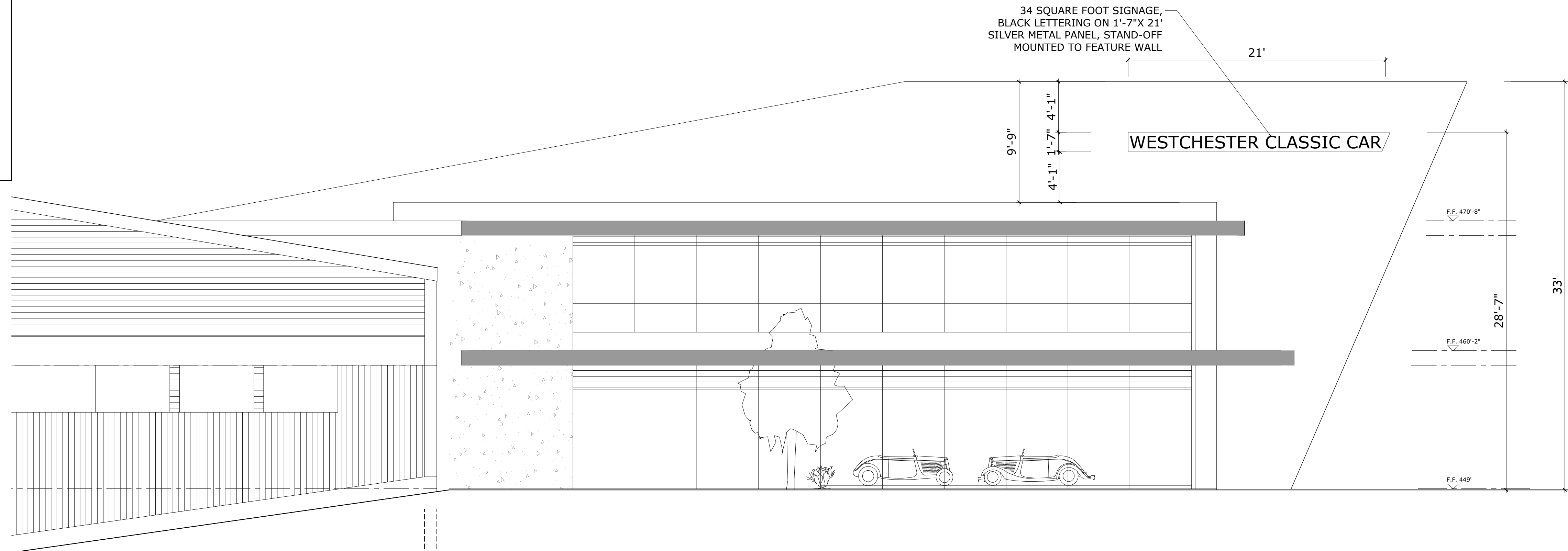
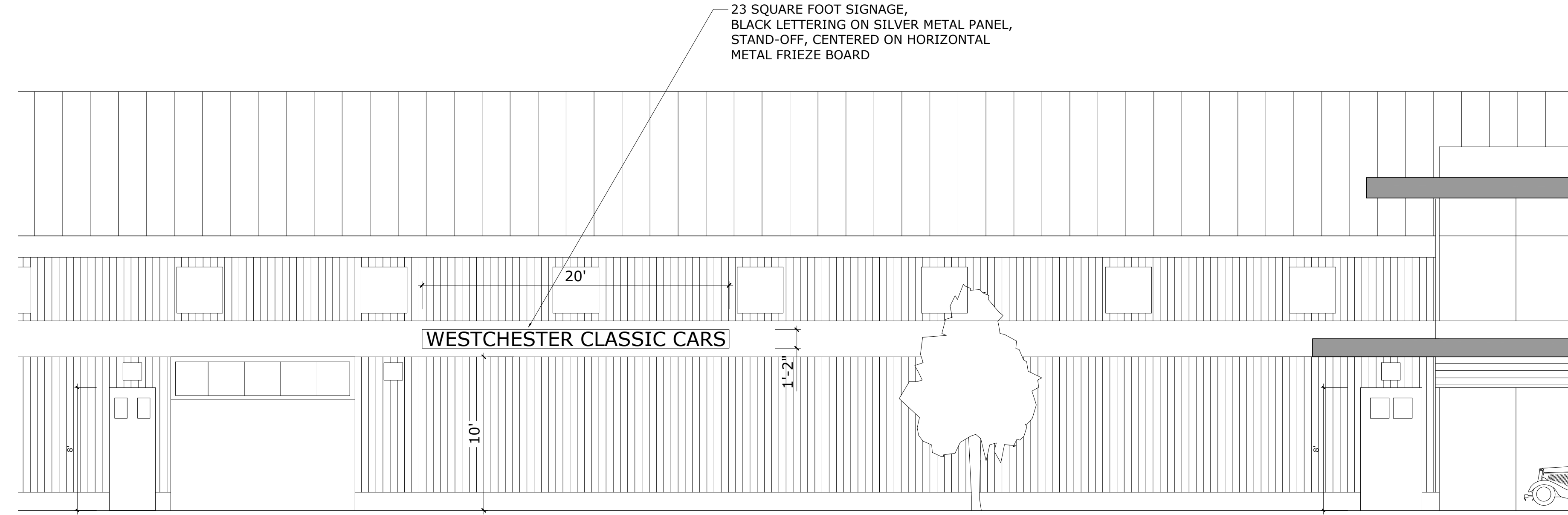
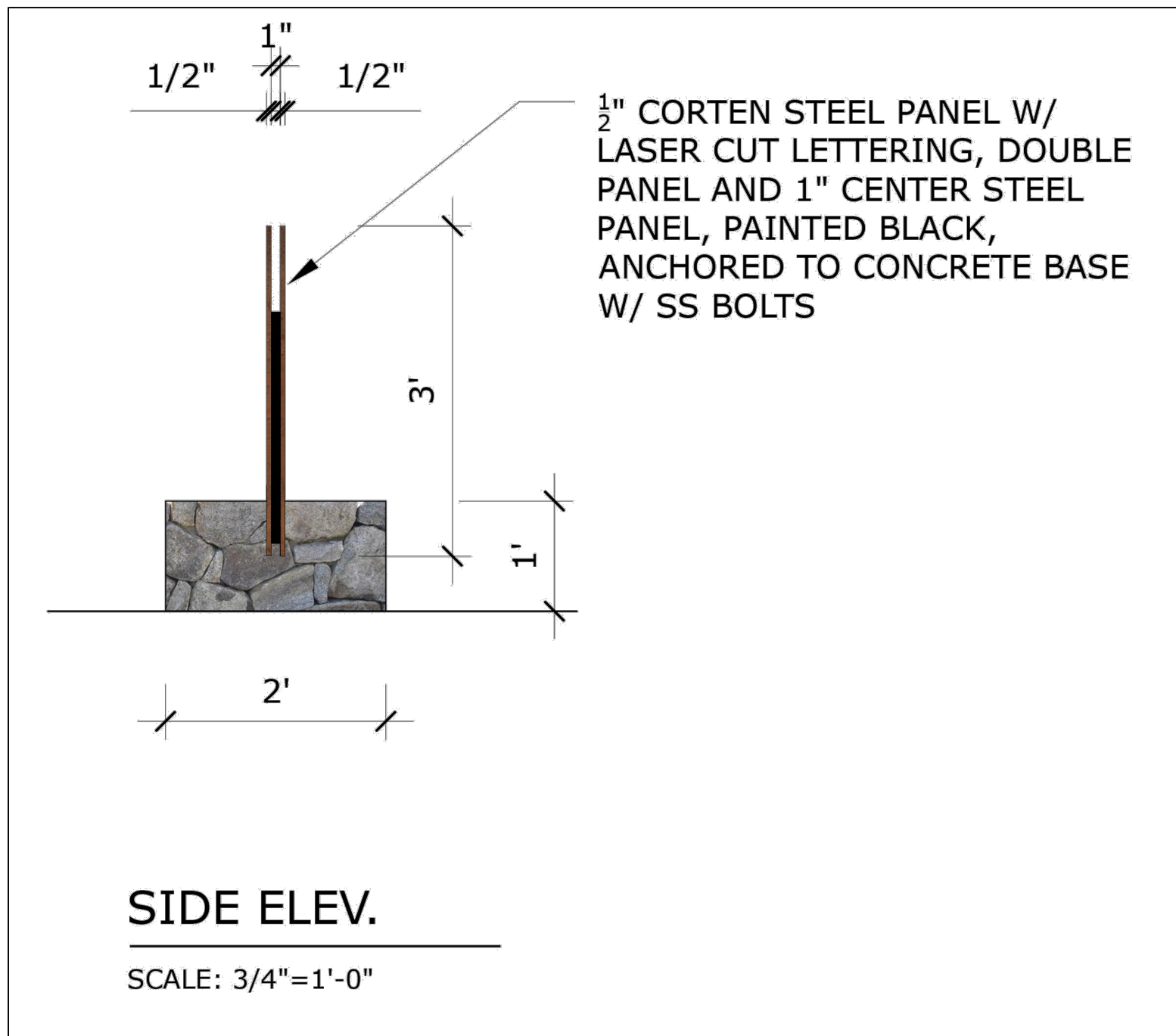
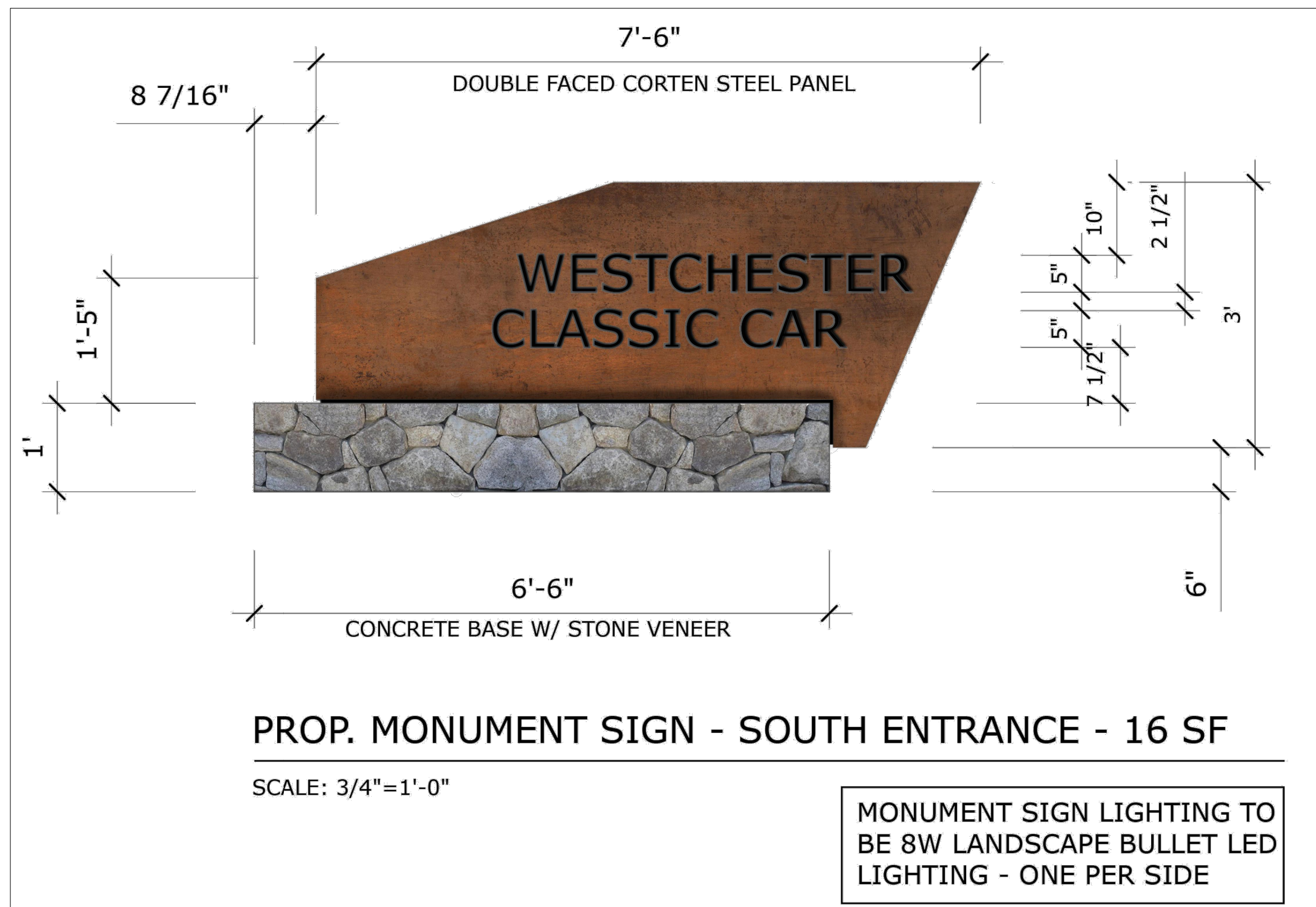
SCALE: 3/32" = 1' - 0"

Plan Title **PROP. SOLAR PANEL SYSTEM LAYOUT**

Title/Owner
 HEIKE A. SCHNEIDER
 ARCHITECT, AIA, LEED AP
 515 CROTON HEIGHTS ROAD
 YORKTOWN HTS, NY 10598
 914 962-2119

CLASSIC CARS
 SHOWROOM, STORAGE, GARAGE
 3451 LEXINGTON AVE
 MOHEGAN LAKE, NY 10547

Date: 4-15-20
 Revision:
 Bidding:



3451 Lexington – Classic Car Storage Facility

Signage

HC zoning, highway commercial.

Chapter 245:

The HC zone permits 1 square foot of signage per 1 linear foot of building frontage up to a total of 80 sq. ft. (wall sign and freestanding sign). The freestanding sign can be a maximum of 24 sq. ft.

The building frontage is greater than 80 linear feet therefore as per code (with no variances) 56 sq. ft. of wall signage and a 24 sq. ft. freestanding sign are allowable.

In addition, we can use the adjustment factor table (Table A) and increase the signage area on the storage building by 1.2 since the wall signage will be between 51 and 100' off the property line.

Wall sign – Showroom building on feature wall (south facing side only) = **34 square feet**

Wall sign – Storage building = **23 SF** (14" x 240) x 1.2 (adjustment factor) = **27.6 square feet**

Freestanding signage (monument sign) = 16 SF double faced corten steel panel + 6.5 SF base = **22.5 SF**

Total square footage for wall and freestanding signage: 79.5 SF or with adjustment factor: 84.1 SF

Plan Title: **PROP. EXTERIOR SIGNAGE DETAILS**

Title/Owner:
HEIKE A. SCHNEIDER
ARCHITECT, AIA, LEED AP
515 CROTON HEIGHTS ROAD
YORKTOWN HTS., NY 10598
914-962-2119

CLASSIC CARS
SHOWROOM, STORAGE, GARAGE
3451 LEXINGTON AVE
MOHEGAN LAKE, NY 10547

Date: 4-17-20
Revision:
Bidding: