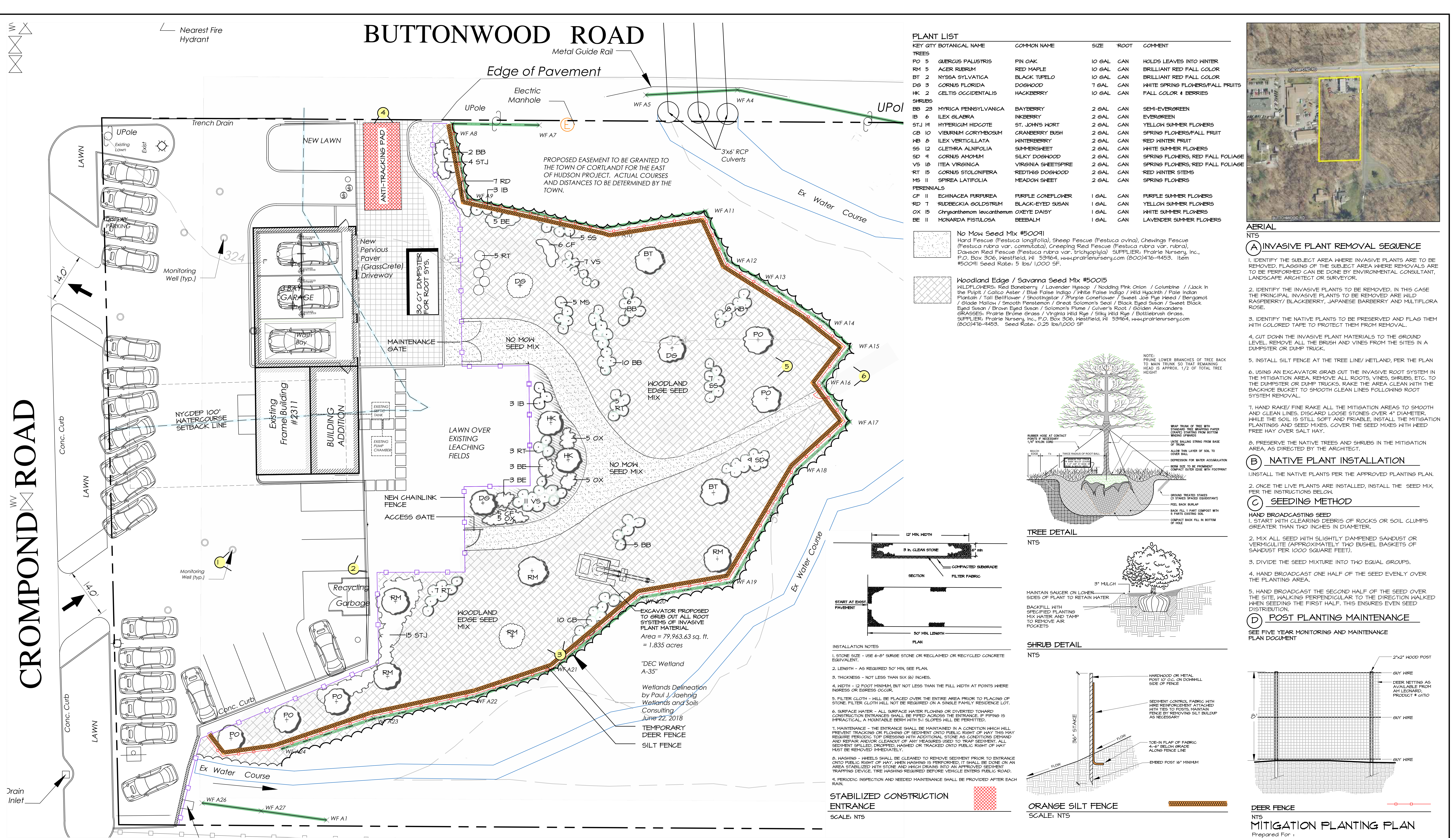


BUTTONWOOD ROAD

CROMPOND ROAD



AERIAL NTS

(A) INVASIVE PLANT REMOVAL SEQUENCE

1. IDENTIFY THE SUBJECT AREA WHERE INVASIVE PLANTS ARE TO BE REMOVED. FLAGGING OF THE SUBJECT AREA WHERE REMOVALS ARE TO BE PERFORMED CAN BE DONE BY ENVIRONMENTAL CONSULTANT, LANDSCAPE ARCHITECT OR SURVEYOR.
2. IDENTIFY THE INVASIVE PLANTS TO BE REMOVED. IN THIS CASE THE PRINCIPAL INVASIVE PLANTS TO BE REMOVED ARE WILD RASPBERRY/BLACKBERRY, JAPANESE BARBERRY AND MULTIFLORA ROSE.
3. IDENTIFY THE NATIVE PLANTS TO BE PRESERVED AND FLAG THEM WITH COLORED TAPE TO PROTECT THEM FROM REMOVAL.
4. CUT DOWN THE INVASIVE PLANT MATERIALS TO THE GROUND LEVEL. REMOVE ALL THE BRUSH AND VINES FROM THE SITES IN A DUMPSTER OR DUMP TRUCK.
5. INSTALL SILT FENCE AT THE TREE LINE/ WETLAND, PER THE PLAN.
6. USING AN EXCAVATOR GRAB OUT THE INVASIVE ROOT SYSTEM IN THE MITIGATION AREA. REMOVE ALL ROOTS, VINES, SHRUBS, ETC. TO THE DUMPSTER OR DUMP TRUCKS. RAKE THE AREA CLEAN WITH THE BACKHOE BUCKET TO SMOOTH CLEAN LINES FOLLOWING ROOT SYSTEM REMOVAL.
7. HAND RAKE/FINE RAKE ALL THE MITIGATION AREAS TO SMOOTH AND CLEAN LINES. DISCARD LOOSE STONES OVER 4" DIAMETER. WHILE THE SOIL IS STILL SOFT AND FRIABLE, INSTALL THE MITIGATION PLANTINGS AND SEED MIXES. COVER THE SEED MIXES WITH NEED FREE HAY OVER SALT HAY.
8. PRESERVE THE NATIVE TREES AND SHRUBS IN THE MITIGATION AREA, AS DIRECTED BY THE ARCHITECT.

(B) NATIVE PLANT INSTALLATION

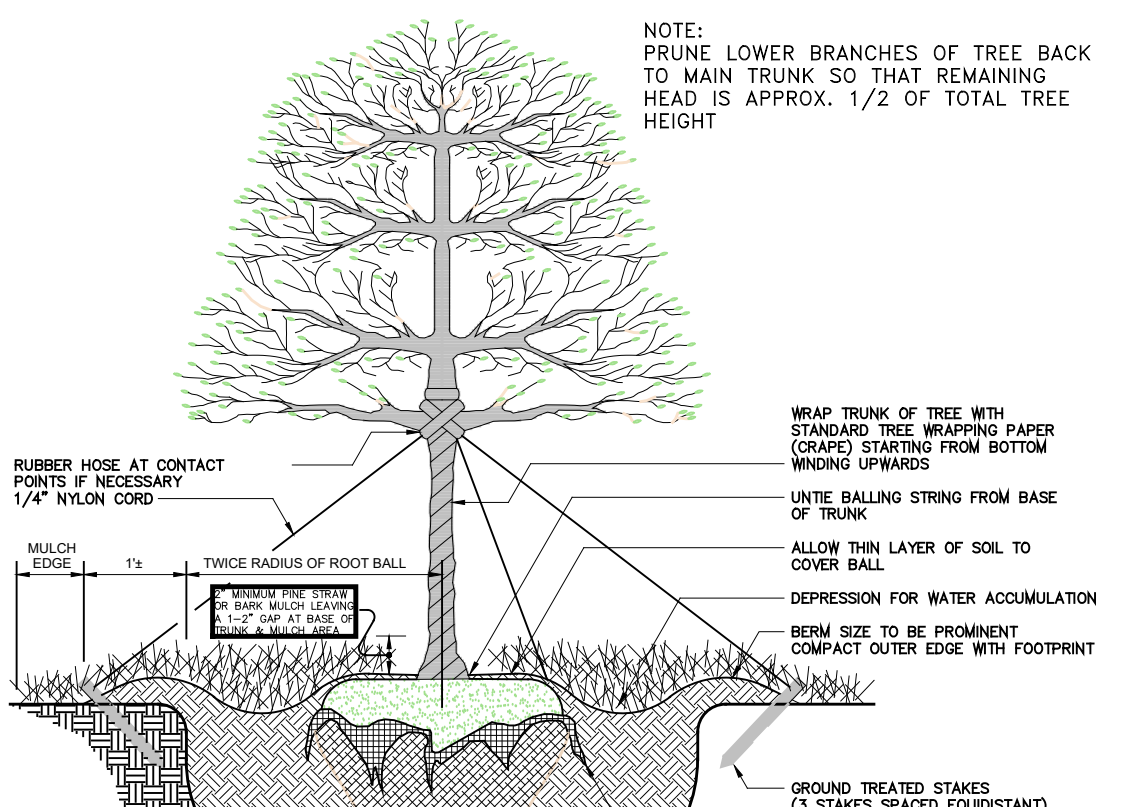
1. INSTALL THE NATIVE PLANTS PER THE APPROVED PLANTING PLAN.
2. ONCE THE LIVE PLANTS ARE INSTALLED, INSTALL THE SEED MIX PER THE INSTRUCTIONS BELOW.

(C) SEEDING METHOD

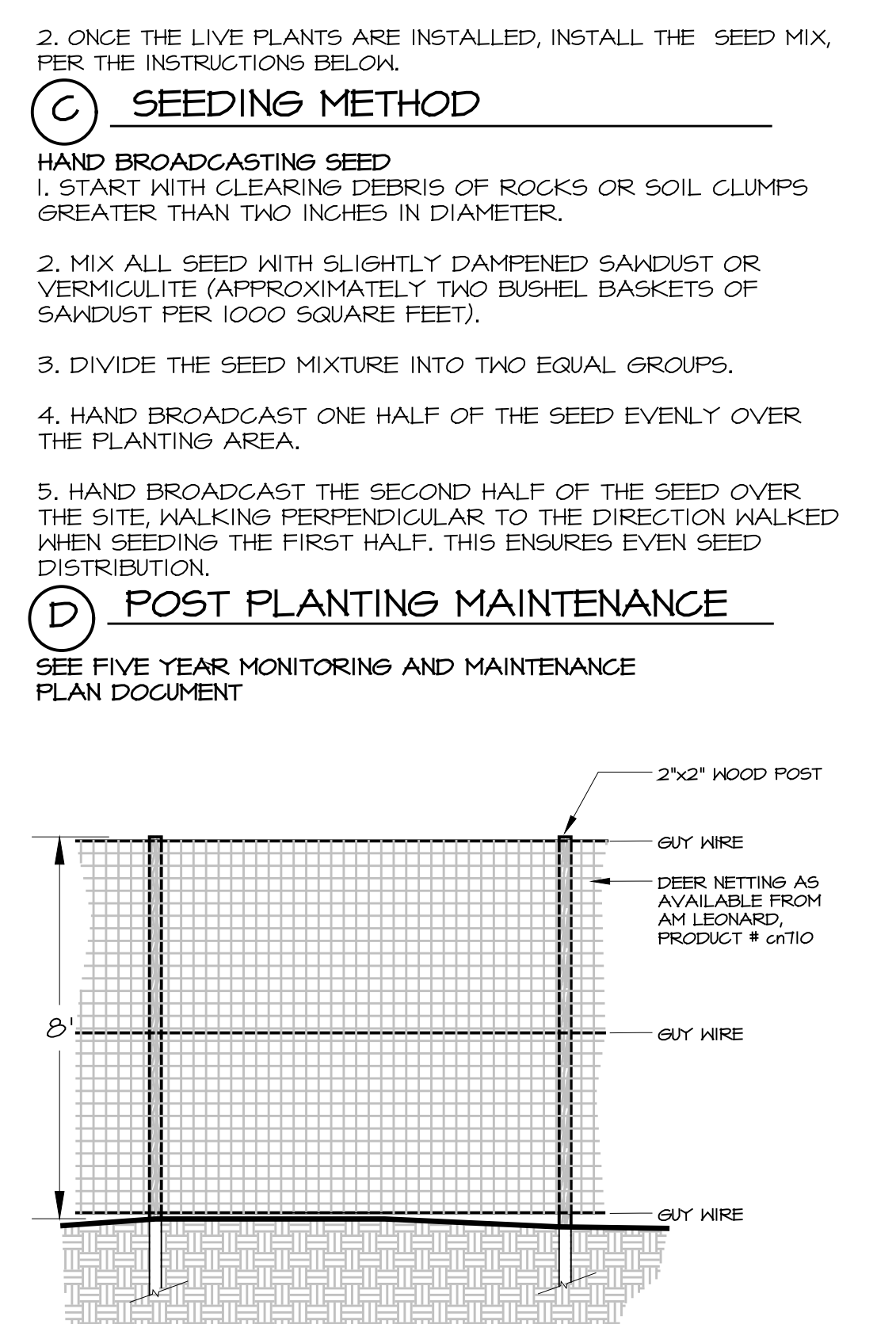
1. HAND BROADCAST SEED START WITH CLEARING DEBRIS OF ROCKS OR SOIL CLUMPS GREATER THAN TWO INCHES IN DIAMETER.
2. MIX ALL SEED WITH SLIGHTLY DAMPENED SAND/ST OR VERMICULITE (APPROXIMATELY TWO BUSHEL BASKETS OF SAND/ST PER 1000 SQUARE FEET).
3. DIVIDE THE SEED MIXTURE INTO TWO EQUAL GROUPS.
4. HAND BROADCAST ONE HALF OF THE SEED EVENLY OVER THE PLANTING AREA.
5. HAND BROADCAST THE SECOND HALF OF THE SEED OVER THE SITE, WALKING PERPENDICULAR TO THE DIRECTION WALKED WHEN SEEDING THE FIRST HALF. THIS ENSURES EVEN SEED DISTRIBUTION.

(D) POST PLANTING MAINTENANCE

1. SEE FIVE YEAR MONITORING AND MAINTENANCE PLAN DOCUMENT



(E) MITIGATION PLANTING PLAN



MITIGATION PLANTING PLAN
SCALE: 1"=10'



1 VIEW SOUTH ON WEST SIDE OF EXISTING BUILDING LOOKING TOWARD PROPOSED WETLAND MITIGATION AREA. EX FIELD AND INVASIVE BRUSH TO BE RECLAIMED TO NATIVE WETLAND BUFFER ENHANCEMENT PLANTINGS



2 VIEW EAST OVER REAR FIELD AREA AND INVASIVE BRUSH WETLAND EDGE. LAWN AREA IN CENTER PHOTO IS SEPTIC AREA AND WILL REMAIN MOWED GRASS. AREA AT MID PHOTO AND TO RIGHT (SOUTH) IS THE MITIGATION AREA



3 VIEW NORTH TOWARD AREA OF PROPOSED BUILDING ADDITION AT BACK OF EXISTING BUILDING. MITIGATION AREA IS AT RIGHT SIDE PHOTO. INVASIVE PLANTS TO BE REMOVED AND AREA RECLAIMED TO WETLAND BUFFER PLANTINGS.



4 VIEW WEST TOWARD AREA OF PROPOSED ADDITION ADJACENT TO EXISTING STRUCTURE. AREA TO LEFT IS THE MITIGATION AREA.



5 VIEW NORTH TOWARD EXISTING BUILDING. INVASIVE BRUSH IN WETLAND BUFFER TO BE REMOVED AND AREA REPLANTED WITH NATIVE WETLAND SPECIES



6 VIEW NORTH ALONG MAINTENANCE PATH FROM SUBJECT PROPERTY TO EXISTING BROOK. ACCESS TO THE MAINTENANCE PATH SHALL BE PROVIDED ON THE PROPOSED PLAN TO MAINTAIN THE MITIGATION AREAS. MAINTENANCE TRAILS TO BE SEEDED WITH NO MOW TURF MIX HT 8".

